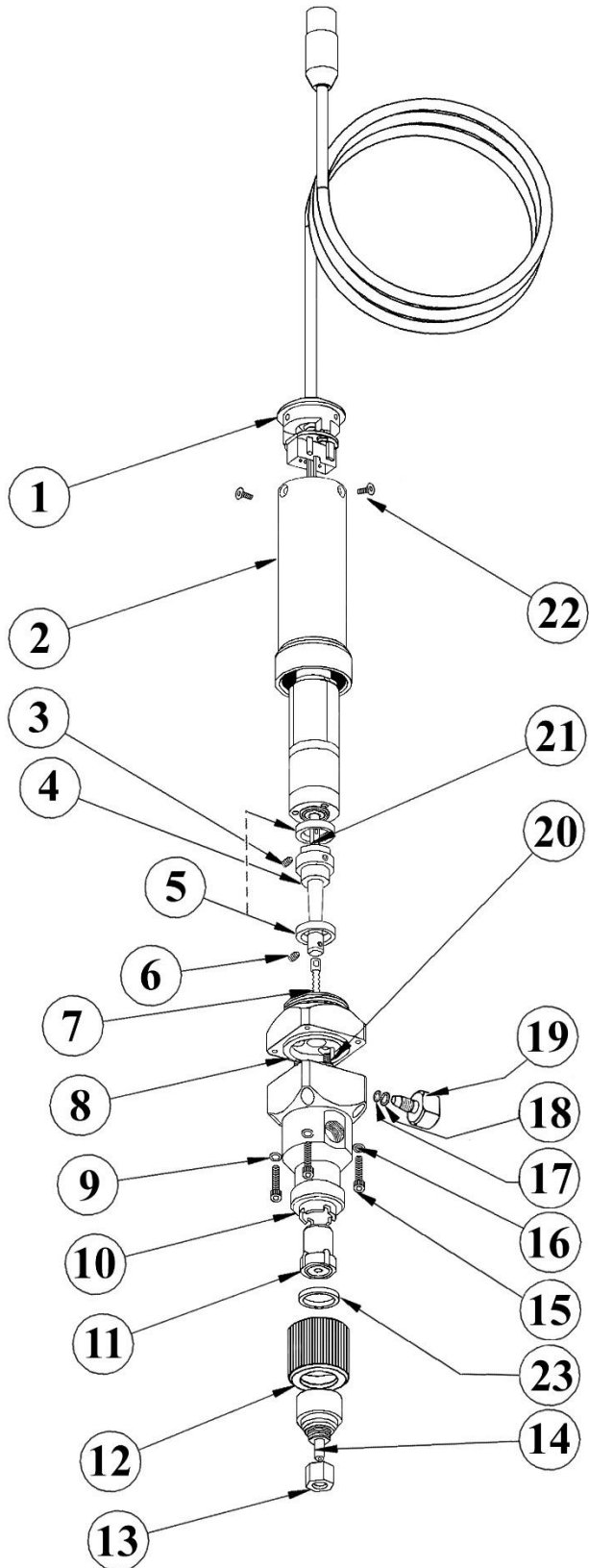


## TS8100 Series Progressive Cavity Pump



Item	Part Number	Description
1	8100-100-007	Cable Assembly
2	7509-0340	Motor Sleeve
3	2800-0903	M3 x 6mm Set Screw
4	7509-0610	Flexible Coupling
5	3300-0586	U-Seal (x2)
6	2800-0836	M2.5 x 3mm Set Screw
7*	8100-100-001	Rotor, TS8100-100
7*	8100-200-001	Rotor, TS8100-200
7*	8100-300-001	Rotor, TS8100-300
8	8100-MPLATE	Motor Mount Plate, Inc. Pin
9	2800-0295	Washer, M2.5, Lock, SS (x4)
10	7509-0580	Stator Housing
11*	8100-100-002	Stator, TS8100-100
11*	8100-200-002	Stator, TS8100-200
11*	8100-300-002	Stator, TS8100-300
12	7509-0090	Lock Nut
13	7090-0030	Locking Cap, TE and TT
14	8100-100-006	Stator Cap Bottom
15	2800-0897	M2.5 x 14mm Socket Screw (x4)
16	2800-0917	Washer #4 NAS 620 (x4)
17	3300-0616	Vent Shaft O-Ring, Small
18	3300-0617	Vent Shaft O-Ring, Large
19	7509-0570	Vent Screw
20	2800-0901	M3 x 6mm Machine Screw (x3)
21	8100-100-004	Motor
22	2800-0900	4-20 x 1/4" Forming Screw (x3)
23	8100-100-009	*OPTIONAL* High Pressure Seal
24	8100-CLEANKIT	Cleaning Kit (Not Shown)
25	TS8100-SYBRACKET	Syringe Bracket (Not Shown)
26	TS8100-MBRACKET	Mounting Bracket (Not Shown)
27	TSD931-81B	Luer Lock, Elbow (Not Shown)
28	TSD931-82B	Luer Lock, Straight (Not Shown)
29	TSD931-96	Luer x 1/8" NPT (Not Shown)
30	TSD931-105	Luer x 10-32 (Not Shown)

**Note:** When refitting stator (11), wet the rotor (7) by applying the dispensing fluid, or appropriate lube that is compatible with the dispensing fluid, to the rotor surface.